

Flat Panel Digital C-Arm

High Frequency Digital C-Arm
for Maximum Precision!



Introducing

Optimize | Illuminate | Perspect

Uncompromised Image Quality with Edge to Edge Visibility!

Larger Field of View without Geometric Distortion

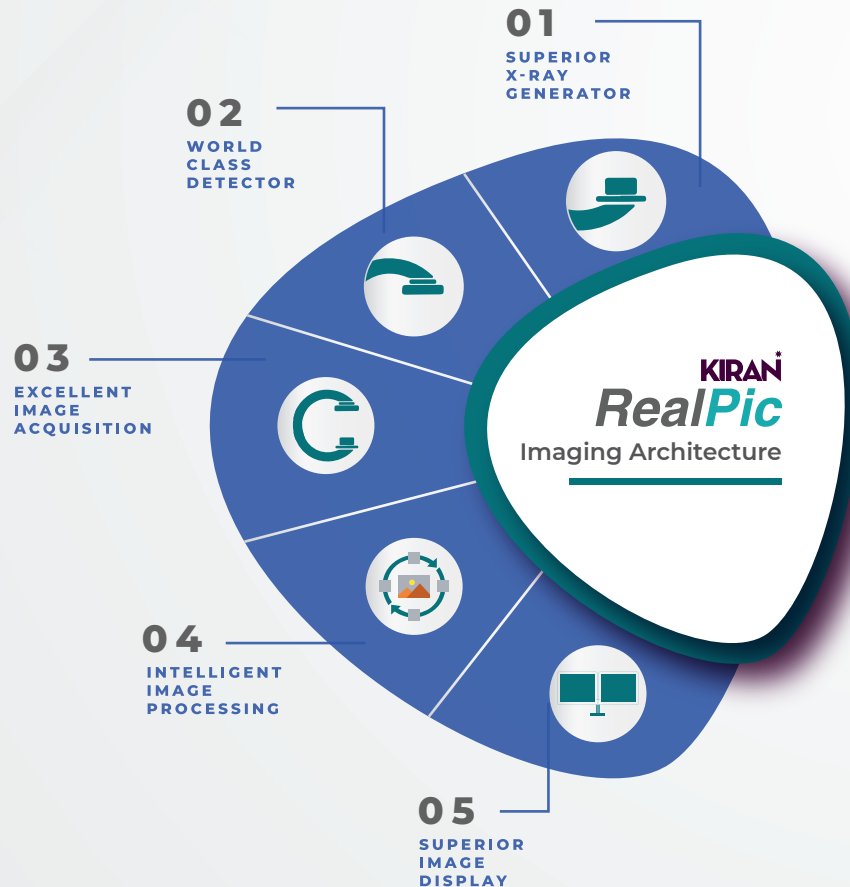


Features

Quintessential for a Hybrid OR

An Innovative and Intuitive Digital C-Arm that addresses both Clinical Value and Overall Workflow. Kiran C-Arm offers Versatility, Robust Performance and High Precision Surgical Imaging.

Flat Panel C-Arm is the perfect addition for your team. With low dose fluoroscopy and Flat Panel Detector technology, Elite/Infinity is an ideal solution for your Hybrid OR.



Superior Image Quality

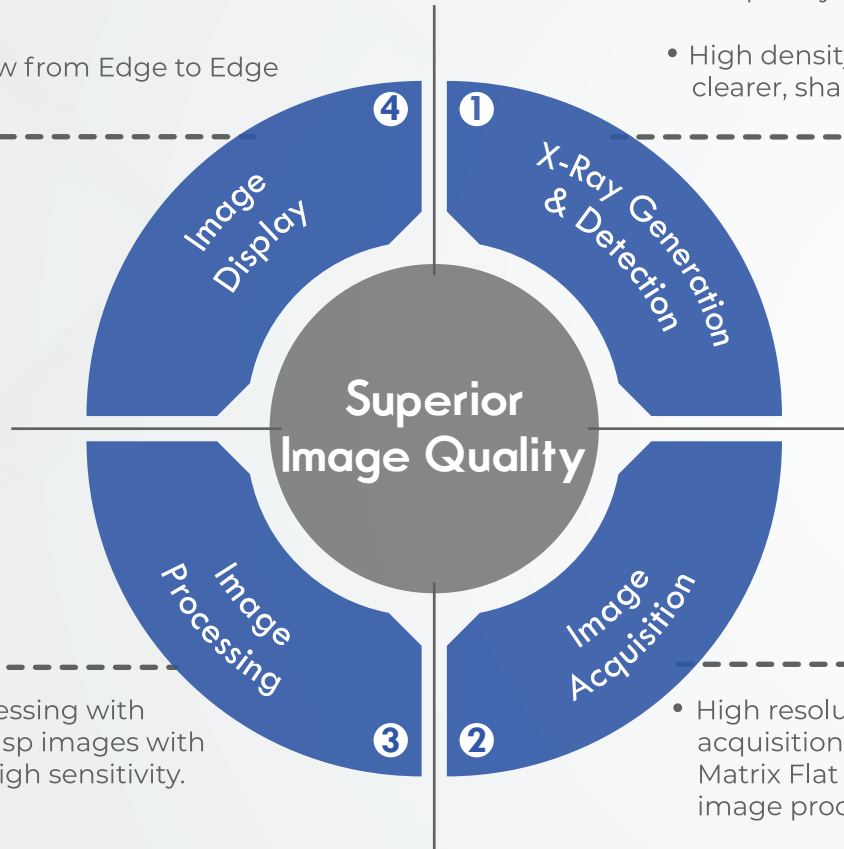
- Delivers an image free of geometrical distortion and offers a higher grayscale resolution, making the various anatomical structures visible with greater accuracy.

- Extended View from Edge to Edge

- World-Class 5 kW(Elite) & 3.5 kW(Infinity) X-Ray Generator with ABS for optimized dose

- Super Harmonic Controlled Frequency

- High density anti-scatter grid for clearer, sharper images



- Coherent image processing with filters that produce crisp images with noise reduction and high sensitivity.

- High contrast fluoroscopy for visualizing moving objects with live imaging without any delay

- Pre and Post process features for image rotation, horizontal and vertical mirror, zoom and invert

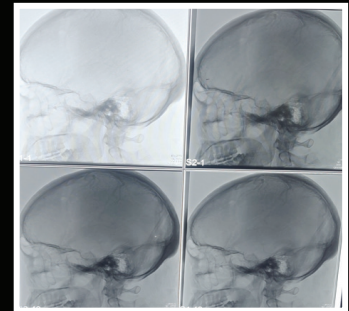
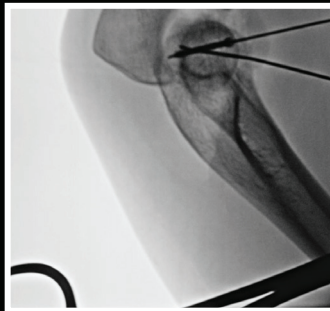
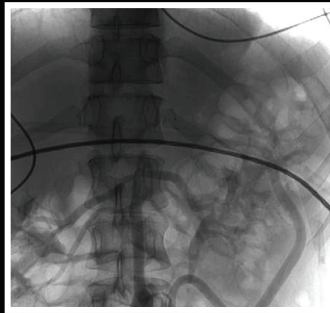
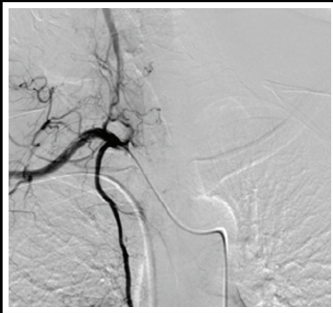
- High resolution digital image acquisition with 1.5 K Pixel Resolution Matrix Flat Panel Detector with 16 bit image processing

- 9x9 inch Flat Panel Detector that enables better acquisition with direct conversion to image with curtailed conversion process that results in lesser data loss

Wide Clinical Applications

- ✓ Wide Intraoperative imaging Applications:
Orthopaedics | Trauma Surgery | Urology | Pain Management | Gastro | Neuro | PMR
Interventional Radiology | Peripheral Vascular Surgery
- ✓ DSA - Digital Subtraction Angiography is used in Vascular diagnostics. It is very useful for the finding of blockage or aneurysm in arteries or veins. It helps the doctors to get useful image by subtracting all background from the main required image. The main use of it is in Peripheral and Neuro cases.
- ✓ Road Mapping Feature allows surgeons to find the path to reach the target location branches during the surgery.

Extraordinary Image Quality



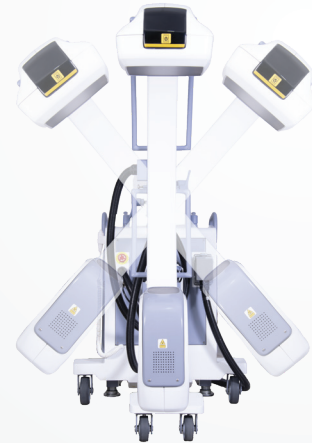
Accurate positioning with Counter-Balance

Free Space: 800 mm
SID: 680 mm



Orbital Rotation : Total Orbital Rotation 140*
Underscan : 105*
Overscan : 35*

C Rotation
Rotation: $\pm 270^\circ$
Additional: $\pm 80^\circ$
C Travel
Total Travel: 200 mm



Wig Wag: 12.5° on each side C-Arm swivelling with manual brake for locking

Impeccably Integrated System

Monitor options:
Dual 19" Medical Grade
Single 32" / 40"

Lightweight and compact
workstation, assisting
in clear communication.

99 inch Flat Panel
Detector with
excellent DQE



Open design with
auxiliary support that
enhances line of sight

Storage bay for printer
and accessories

Efficient foot brake to
lock the wheel movement
or steady positions.

PU Wheels to reduce
the noise and enable smooth
movement on every type of floor
(Hard Surface, Epoxy Coated floor,
Matte finish floors)

Streamlined Workflow



Ease of Use

Advanced processor with Windows OS

User friendly Workstation interface for easy & faster workflow

ABS or ADRC mode enables to use the equipment in fully automatic mode

Semi Auto & Fully Auto mode for ease of operations and clear button indication

Radiography mode allows for Digital exposure with wide range of factors

Better Heat dissipation in the X-Ray Tube for increased throughput



Superior Digital Image Management

Real time image rotation and Real time image capture

Recording of images as 'Last image saved' and Cine loop

Length and Angle stenosis measurement

Text annotation

Streamlined Workflow

Efficient Storage

Storage of last hold image and cine loop
permanent storage more than 1,00,000 images

USB memory stick and DVD writer support
for image backup

DICOM option that enables transmitting,
integration and sharing of data between
different medical imaging devices

Printer connectivity with paper and film printers



Advanced Connectivity

PACS

HIS RIS

Flexible Power Management

Extra power for complex cases with Online UPS
which keeps a steady and unchanged flow
of power without need for power transfer switch.

Active cooling to prevent overheating during long
procedures. External Fan is available to increase the
cooling with Heat Sink to cool down the tube during surgery



Clearer Insights with Lower Dose

- Low dose fluoroscopy; getting optimal image with just the right dose.
- User friendly dose adjustment with Automatic parameter selection for best image with low dose and Manual dose reduction in low dose mode. Semi auto mode to select proper mA with less dose for better image quality.
- Dedicated function to reduce exposure for paediatric procedures. Low dose fluoroscopy mode by cutting down mA by half on all kV factors to reduce patient dose while maintaining excellent image quality.

Reliable Service Support

- Well trained Service team to ensure your equipment uptime at optimal level
- Modular design for ease of use and quick remote technical support and diagnosis
- Display for self-diagnostic maintenance & software for online support

Technical Specifications

Key Features	Elite	Infinity
Output Power	5.0 kW	3.5 kW
Normal Mode Current	0.6 - 5.5 mA	0.6 - 4.5 mA
Pediatric Mode Current	0.1 - 2.5 mA	0.1 - 2.25 mA
Boost Mode Current	0.8 - 12 mA	0.8 - 8 mA
Snapshot Mode Current	0.8 - 12 mA	0.8 - 8 mA
Radiography Mode Current	35 - 80 mA	25 - 70 mA
Imaging Resolution	1.5K X 1.5K	1.5 K Pixel Pitch
Monitor	Dual 19" Medical Grade Single 32" / 40" Monitor	Dual 19" Medical Grade Single 32" / 40" Monitor
Field of View	23 cm/9"	23 cm/9"
Free Space	800 mm	800 mm
Immersion Depth	680 mm	680 mm
Orbital Movement	140°	140°
	(+105° to -35°)	(+105° to -35°)
Image Storage	PC Based Memory - Storage depends on Hard Disk Space	PC Based Memory - Storage depends on HD Space more than 10,000 images
Portability of Image	USB Drive, LAN Connectivity, CD Writer & DICOM	USB Drive, LAN Connectivity, CD Writer & DICOM

KIRAN^{*}

A Division of TRIVITRON Healthcare



For Service Support

Please Call

 **9840080008**

www.kiranxray.com | www.trivitron.com

kiran@kiranxray.com